

WARNINGS

It is highly recommended to install the USB driver in your PC **BEFORE** you connect the Nomad-Touch to it. You will find the driver on the Internet and on the DVD that comes with this Nomad.

Also, using the USB charger, make sure the internal battery is fully charged before attempting to use this Nomad; charging to full capacity will take about 5 hours.

This short form guide deals with the basic operation of your new Nomad-Touch™ (NMT) instrument. Here, you will find information about preparing the unit and doing initial measurements. The detailed reference instructions are given in the Nomad-Touch User Guide, document # G1050Rxx (contact Neoptix for a copy).

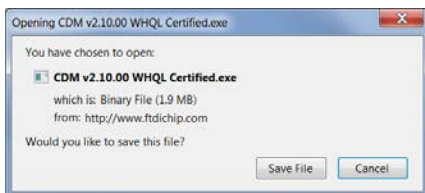
To initially connect to your new NMT, you will need the following items:

- A USB cable and a USB charger (included with the unit)
- An Internet link, or the Neoptix software DVD
- A PC computer (Windows-Vista, -7, -8 or -10) with:
 - Software, either:
 - OptiLink-II
 - Optional: HyperTerminal (or Tera Term).

Your new Nomad comes calibrated and ready to use. Connect it to a suitable USB 5V supply; allows 5 hours for a full charge.

You will find the driver on the Neoptix DVD; you can also download it from the Internet from this site: <http://www.ftdichip.com/Drivers/CDM/CDM%20v2.10.00%20WHQL%20Certified.exe>. The procedure is as follows:

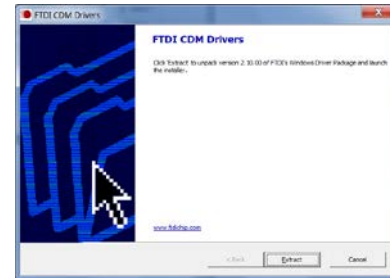
- Save the file on your C: hard disk, or on a local disk of your choice.



- Click the file name (in Windows Explorer) to execute it.



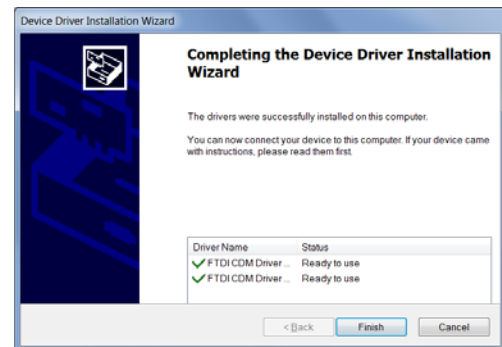
- The installation will proceed, first with this window, click Extract:



- Then the installation proper will proceed, click Next:



- Finally, you get this information. Click Finish.



You can now connect your Nomad-Touch to this PC.

Configuration with OptiLink-II

Make sure OptiLink-II is installed on your PC; a copy of it is included on the Neoptix DVD, or download it from the Neoptix website (<http://www.neoptix.com/download.asp> and contact Neoptix for a password).

Neoptix recommends that you use OptiLink-II instead of the HyperTerminal software, as OptiLink-II offers more features.

Click on "Connect" to start OptiLink-II. You should get this window. If you cannot connect, check your wiring, USB driver installation, COM port selection, etc.



Click on “Acquire temperatures”, and the following window pane will appear:



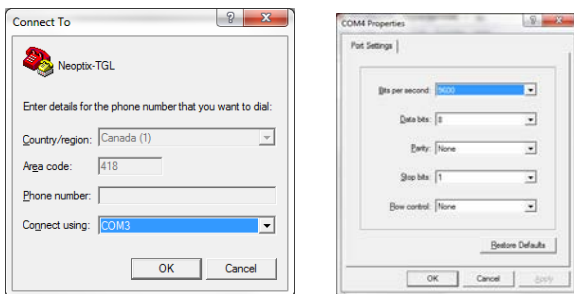
OptiLink-II allows you to configure the more parameters, such as:

- Logging temperature parameters
- Snap Log settings
- Downloading of logged data
- Etc.

Configuration with HyperTerminal

HyperTerminal is a standard Windows program (XP and previous versions¹) that can be easily used to exercise your NMT thermometer. To use HyperTerminal, you first set its properties as follows:

- 1- In the “Connection Description” window, enter a name that suits you, such as “Neoptix-NMT”. Click OK.
- 2- In the next window, “Connect To”, select COM1 (or another COM port, if you are planning to use another port than COM1) in the box called “Connect using”. Click OK.
 - You can confirm your COM port selection by consulting the Windows Device Manager application (available from “My Computer” and then “System properties”).
- 3- Then the COM1 Properties window will come up. As indicated above and as shown in the figure at right, set the port parameters to:
 - 9600 Baud
 - 1 Stop-Bit and No-Parity
 - Flow control must be set to None.
- 4- Click OK.



Printed in Canada.

HyperTerminal would allow you to use the serial commands that are documented in the G1050Rxx user guide. The most useful commands would be:

- Erase log files
- Temperature logging management
- Set date and time
- Manage temperature offset
- Get probe optical signal strength (y command).

Please note that some operation, such as file downloading, cannot be done with HyperTerminal; these operations can only be done using OptiLink-II.

This terminates this short form guide. For more details, you are encouraged to consult the NMT user guide, part number G1050Rxx. Enjoy your new Nomad-Touch!

¹ Vista, Win-7, Win-8 and Win-10 users: HyperTerminal is not part of these operating systems. However, an equivalent program (HTPE) can be downloaded (not free) at the following website: <http://www.hilgraeve.com/htpe/download.html>. Tera Term is also an interesting option (free); see <http://en.sourceforge.jp/projects/ttssh2/downloads/56100/teraterm-4.74.zip/>.

Neoptix Canada LP / Qualitrol Company
 1415, rue Frank-Carrel, Suite 220
 Québec City QC G1N 4N7
 Canada
 Tel: +1-418-687-2500
support@neoptix.com