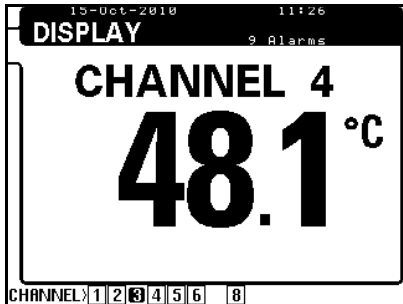


neoptix T/GUARD2 & 2B – QUICK START GUIDE

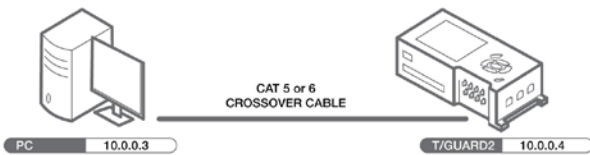
This short form guide deals with the basic operation of your new T/Guard2 or T/Guard-2B instrument (referred as T/Guard in this document). Here, you will find information about preparing the unit and doing initial measurements. The detailed reference instructions are given in the T/Guard User Guide, documents # G1019 0r # G1048.

Your new T/Guard comes calibrated and ready to use. Connect a suitable power supply (nominally 24VDC at 2A). Although the unit does have a power switch¹, it should come on immediately. The display should look like this:



As a next step, you will connect your T/Guard to a computer, either a PC or a Mac, using an Ethernet link and a fixed IP address (see User Guide for other network topologies).

You connect the T/Guard through an Ethernet interface and cable, using a “private” network arrangement. This approach is illustrated here:



Setting up a private network

This section includes some information on how to set the network parameter, using a static IP address (private network). Here, you will connect your PC directly to the T/Guard2 using a “crossover” Ethernet cable², as illustrated in the figure above.

We will assume here that the IP address of your computer Ethernet interface will be set to 10.0.0.3 and the IP address of the T/Guard will be 10.0.0.4. So we will first configure the T/Guard IP setting.

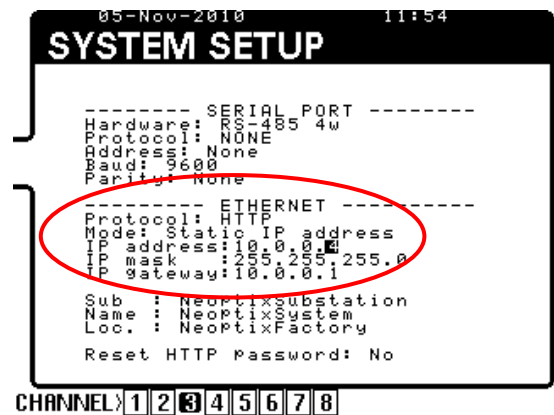
The IP address should be 10.0.0.4 and the IP mask is 255.255.255.0 (IP gateway value is not important); Mode must be “Static IP Address”. You can access the network parameters on the

¹ The T/Guard power switch only controls power to the local display. To perform a complete power off, it is required to unplug the 24VDC power connector from the unit, or turn off the external power supply module.

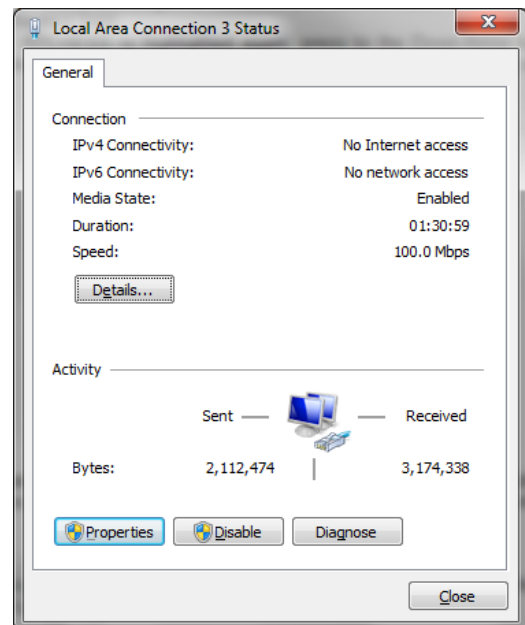
² If using a recent (less than ~5 years) PC, a crossover cable may not be required, as the newer PCs have Ethernet interfaces that can auto-detect Ethernet signal flow direction.

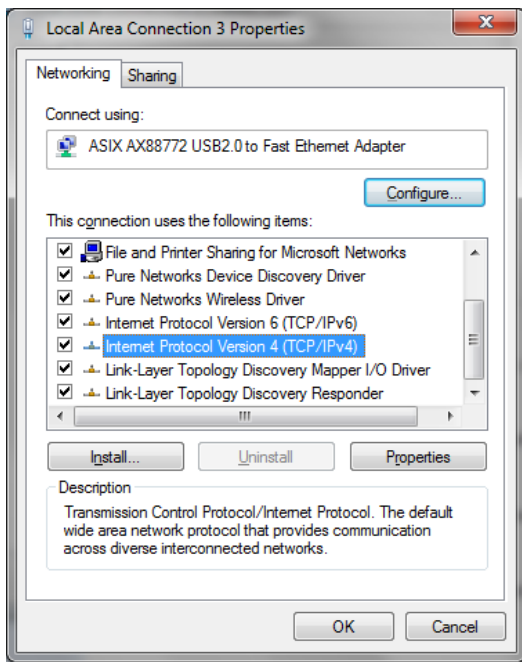
T/Guard display (press twice the SETUP key), until you get the following display. Furthermore, if you need to change the IP address and/or the type of address you want (static or dynamic), you will need to edit these values using the T/Guard keypad. Although editing is explained in details later in this guide, here is a quick way to change the IP address:

- Press the OK key and press the Down-Arrow key as many times as required to reach the menu you want to edit.
- Press the OK key again. Then the first portion of the IP address becomes highlighted. Use the Down- and Up-Arrows to change the number to your desired value. Then press the Right-Arrow key to move to the next field.
- When IP ADDRESS is highlighted again, press to the Down-Arrow key until the following message “Save ?: yes” appears; then you need to press the OK key to do a final save operation.

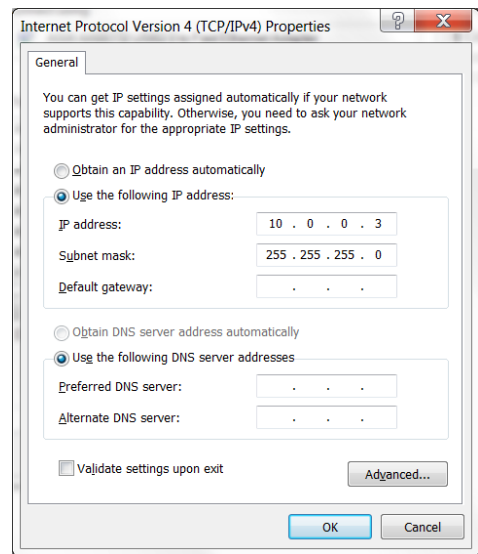


Next, you need to make sure your PC computer is also set to work with a static IP address, which should be 10.0.0.3. For this, you need to open the Windows Local Area Network window, as shown here:





And then open the Properties window. Highlight "Internet Protocol Version 4 and click Properties; you should get the following window. Select the "Use the following IP address" button, and enter the information as shown in the figure on the right, below:

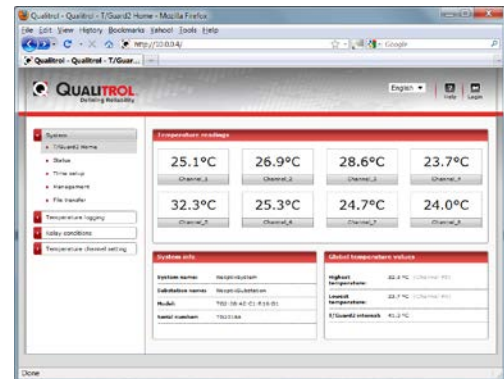
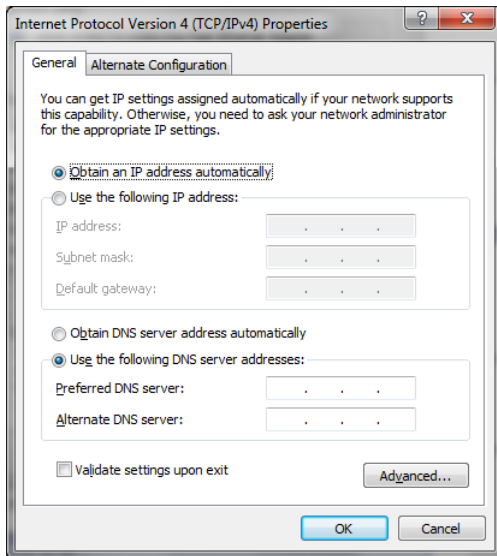


Close all windows.

If you have problems connecting to the Ethernet, or to understand the parameters in the red box above, you should contact your Local Network Administrator for help.

Working with the Internet browser

Start your compatible web browser³. In the address bar, enter "10.0.0.4". The first page you will see is the Home page, as follows (8-probe system shown):



By default, all parameters have preset values that are normally compatible with power transformers. You are free to change any parameters as you wish; however, for now it is suggested to leave all parameters to their default values.

Feel free to experiment with the various web pages. Enjoy!

This concludes this short form user guide. For more information, refer to the complete T/Guard user guide (document # g1019rxx for the T/Guard2 or # g1048rxx for the T/Guard-2B).

Neoptix Inc. / Qualitrol Company
 1415, rue Frank-Carrel, Suite 220
 Québec City QC G1N 4N7
 Canada
 Tel: +1-418-687-2500
support@neoptix.com

Printed in Canada.

³ Compatible web browsers:

- Microsoft Internet Explorer version 6 and above
- Mozilla Firefox version 3.6 and above (Do not use Firefox versions 15 and above with the original T/Guard2)
- Google Chrome
- Apple Safari.